

Test Report

No. CANEC0902061701

Date: 22 Apr 2009

Page 1 of 7

SHENZHEN EARLYSUN TECHNOLOGY CO.,LTD
2F,NO.2, NO.25 FACTORY WANGTANG INDUSTRIAL PARK SHIGU ROAD XILI TOWN,SHENZHEN
CHINA

The following sample(s) was/were submitted and identified on behalf of the clients as :
ES-770 Lead-Free Solder Paste

SGS Job No. : 11726865 - SZ
Client Reference Information : Sn96.5Ag3Cu0.5、Sn99Ag0.3Cu0.7、Sn95.5Ag4Cu0.5、
Sn95.5Ag3.8Cu0.7 Mixture
Buyer : FOXCONN
Date of Sample Received : 10 Apr 2009
Testing Period : 10 Apr 2009 - 17 Apr 2009
Test Requested : Selected test(s) as requested by client.
Test Method : Please refer to next page(s).
Test Results : Please refer to next page(s).

Signed for and on behalf of
SGS-CSTC Ltd.



Sunny Huang
Lab Sr. Supervisor

This document is issued by the Company under its General Conditions of Service printed overleaf or available on request and accessible at http://www.sgs.com/terms_and_conditions.htm. Attention is drawn to the limitation of liability, indemnification and jurisdiction issues defined therein. Any holder of this document is advised that information contained hereon reflects the Company's findings at the time of its intervention only and within the limits of Client's instructions, if any. The Company's sole responsibility is to its Client and this document does not exonerate parties to a transaction from exercising all their rights and obligations under the transaction documents. Any unauthorized alteration, forgery or falsification of the content or appearance of this document is unlawful and offenders may be prosecuted to the fullest extent of the law. Unless otherwise stated the results shown in this test report refer only to the sample(s) tested. This document cannot be reproduced except in full, without prior approval of the Company.

Test Report

No. CANEC0902061701

Date: 22 Apr 2009

Page 2 of 7

Test Results:

ID for specimen 1 : CAN09-020617.001
 Description for specimen 1 : Gray paste

Elementary Analysis

Test Item(s)	Unit	Test Method (Reference)	Result	MDL
Cadmium (Cd)	mg/kg	IEC 62321:2008, ICP-OES	N.D.	2
Lead (Pb)	mg/kg	IEC 62321:2008, ICP-OES	56	2
Mercury (Hg)	mg/kg	IEC 62321:2008, ICP-OES	N.D.	2
Hexavalent Chromium (CrVI) by alkaline extraction	mg/kg	IEC 62321:2008, UV-Vis	N.D.	2

Note:

1. mg/kg = ppm
2. N.D. = Not Detected (< MDL)
3. MDL = Method Detection Limit
4. The result(s) of specimen is/are of the total weight of dry sample.

Flame Retardants

Test Item(s)	Unit	Test Method (Reference)	Result	MDL
Sum of PBBs	mg/kg	-	N.D.	-
Monobromobiphenyl	mg/kg	IEC 62321:2008, GC-MS	N.D.	5
Dibromobiphenyl	mg/kg	IEC 62321:2008, GC-MS	N.D.	5
Tribromobiphenyl	mg/kg	IEC 62321:2008, GC-MS	N.D.	5
Tetrabromobiphenyl	mg/kg	IEC 62321:2008, GC-MS	N.D.	5
Pentabromobiphenyl	mg/kg	IEC 62321:2008, GC-MS	N.D.	5
Hexabromobiphenyl	mg/kg	IEC 62321:2008, GC-MS	N.D.	5
Heptabromobiphenyl	mg/kg	IEC 62321:2008, GC-MS	N.D.	5
Octabromobiphenyl	mg/kg	IEC 62321:2008, GC-MS	N.D.	5
Nonabromobiphenyl	mg/kg	IEC 62321:2008, GC-MS	N.D.	5
Decabromobiphenyl	mg/kg	IEC 62321:2008, GC-MS	N.D.	5
Sum of PBDEs	mg/kg	-	N.D.	-
Monobromodiphenyl ether	mg/kg	IEC 62321:2008, GC-MS	N.D.	5
Dibromodiphenyl ether	mg/kg	IEC 62321:2008, GC-MS	N.D.	5
Tribromodiphenyl ether	mg/kg	IEC 62321:2008, GC-MS	N.D.	5
Tetrabromodiphenyl ether	mg/kg	IEC 62321:2008, GC-MS	N.D.	5
Pentabromodiphenyl ether	mg/kg	IEC 62321:2008, GC-MS	N.D.	5
Hexabromodiphenyl ether	mg/kg	IEC 62321:2008, GC-MS	N.D.	5
Heptabromodiphenyl ether	mg/kg	IEC 62321:2008, GC-MS	N.D.	5
Octabromodiphenyl ether	mg/kg	IEC 62321:2008, GC-MS	N.D.	5
Nonabromodiphenyl ether	mg/kg	IEC 62321:2008, GC-MS	N.D.	5
Decabromodiphenyl ether ##	mg/kg	IEC 62321:2008, GC-MS	N.D.	5

This document is issued by the Company under its General Conditions of Service printed overleaf or available on request and accessible at http://www.sgs.com/terms_and_conditions.htm. Attention is drawn to the limitation of liability, indemnification and jurisdiction issues defined therein. Any holder of this document is advised that information contained hereon reflects the Company's findings at the time of its intervention only and within the limits of Client's instructions, if any. The Company's sole responsibility is to its Client and this document does not exonerate parties to a transaction from exercising all their rights and obligations under the transaction documents. Any unauthorized alteration, forgery or falsification of the content or appearance of this document is unlawful and offenders may be prosecuted to the fullest extent of the law. Unless otherwise stated the results shown in this test report refer only to the sample(s) tested. This document cannot be reproduced except in full, without prior approval of the Company.

Note:

1. mg/kg = ppm
2. N.D. = Not Detected (< MDL)
3. MDL = Method Detection Limit
4. "-" = Not regulated
5. ## = The exemption of DecaBDE in polymeric application according 2005/717/EC was overruled by the European Court of Justice by its decision of 01.04.2008. Subsequently DecaBDE is included in the sum of PBDE after 01.07.2008
6. The result(s) of specimen is/are of the total weight of dry sample.

Halogen

Test Item(s)	Unit	Test Method (Reference)	Result	MDL
Chlorine (Cl)	mg/kg	BS EN 14582:2007, IC	N.D.	50
Bromine (Br)	mg/kg	BS EN 14582:2007, IC	N.D.	50

Note:

1. mg/kg = ppm
2. N.D. = Not Detected (< MDL)
3. MDL = Method Detection Limit
4. The result(s) of specimen is/are of the total weight of wet sample.

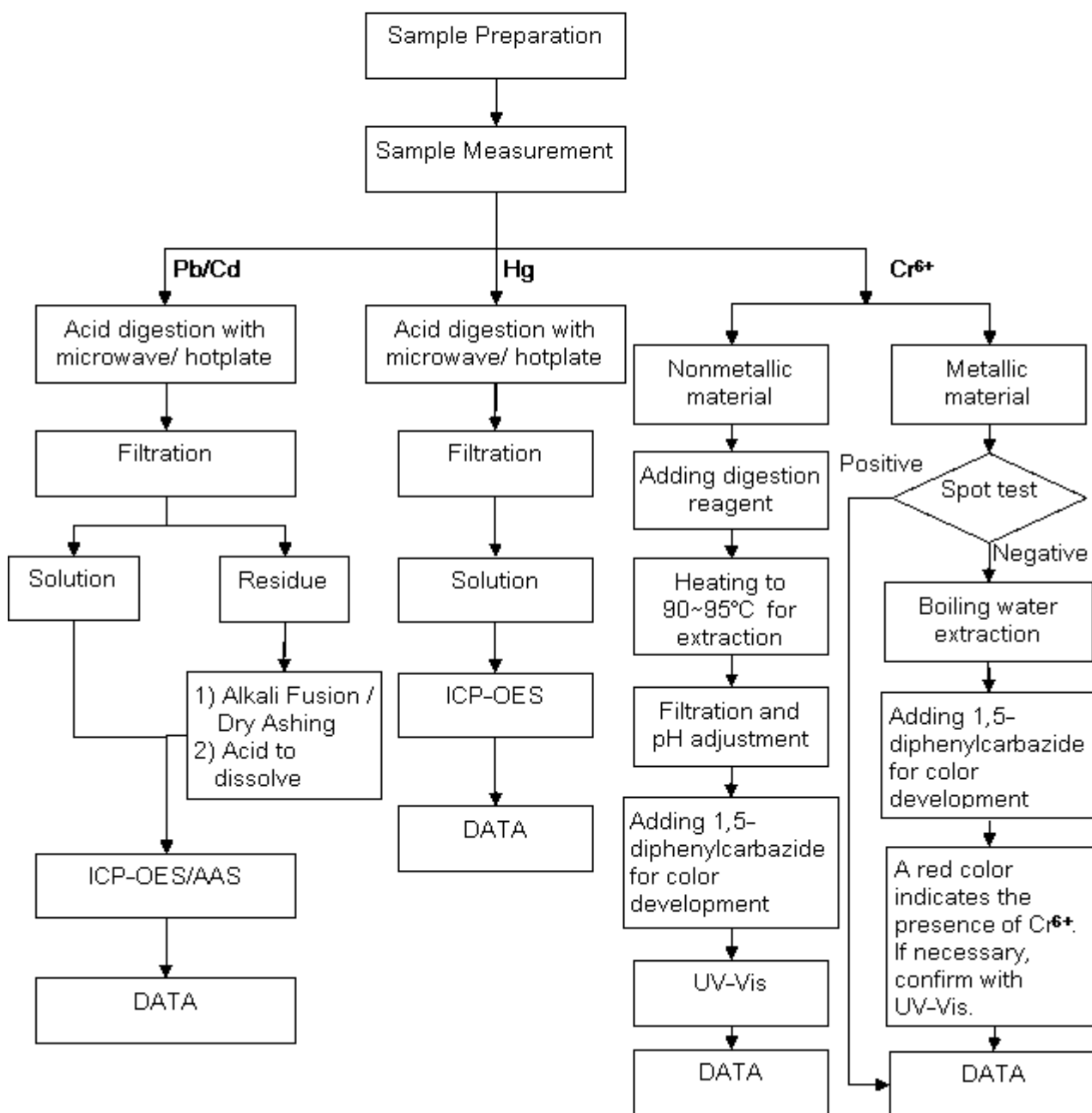
Remark: Results and photo(s) of this report have been taken from test report CANEC0901824801.

This document is issued by the Company under its General Conditions of Service printed overleaf or available on request and accessible at http://www.sgs.com/terms_and_conditions.htm. Attention is drawn to the limitation of liability, indemnification and jurisdiction issues defined therein. Any holder of this document is advised that information contained hereon reflects the Company's findings at the time of its intervention only and within the limits of Client's instructions, if any. The Company's sole responsibility is to its Client and this document does not exonerate parties to a transaction from exercising all their rights and obligations under the transaction documents. Any unauthorized alteration, forgery or falsification of the content or appearance of this document is unlawful and offenders may be prosecuted to the fullest extent of the law. Unless otherwise stated the results shown in this test report refer only to the sample(s) tested. This document cannot be reproduced except in full, without prior approval of the Company.

ATTACHMENTS

Testing Flow Chart

- 1) Name of the person who made measurement: Luke Xu / Lily Lee
- 2) Name of the person in charge of measurement: Adams Yu / Leo Wang
- 3) These samples were dissolved totally by pre-conditioning method according to below flow chart (Cr⁶⁺ test method excluded) .

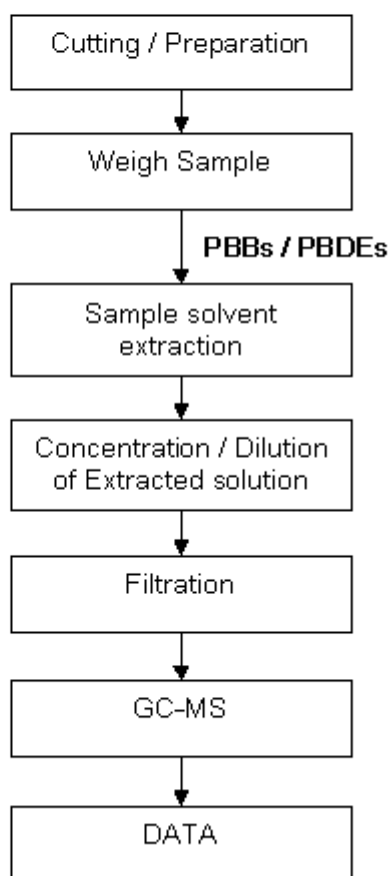


This document is issued by the Company under its General Conditions of Service printed overleaf or available on request and accessible at http://www.sgs.com/terms_and_conditions.htm. Attention is drawn to the limitation of liability, indemnification and jurisdiction issues defined therein. Any holder of this document is advised that information contained hereon reflects the Company's findings at the time of its intervention only and within the limits of Client's instructions, if any. The Company's sole responsibility is to its Client and this document does not exonerate parties to a transaction from exercising all their rights and obligations under the transaction documents. Any unauthorized alteration, forgery or falsification of the content or appearance of this document is unlawful and offenders may be prosecuted to the fullest extent of the law. Unless otherwise stated the results shown in this test report refer only to the sample(s) tested. This document cannot be reproduced except in full, without prior approval of the Company.



Testing Flow Chart

- 1) Name of the person who made measurement: Lina Tang
- 2) Name of the person in charge of measurement: Tina Zhao

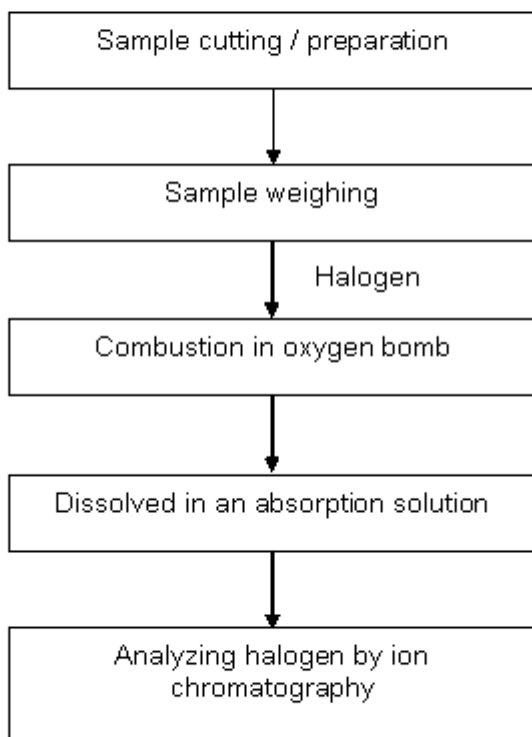


This document is issued by the Company under its General Conditions of Service printed overleaf or available on request and accessible at http://www.sgs.com/terms_and_conditions.htm. Attention is drawn to the limitation of liability, indemnification and jurisdiction issues defined therein. Any holder of this document is advised that information contained hereon reflects the Company's findings at the time of its intervention only and within the limits of Client's instructions, if any. The Company's sole responsibility is to its Client and this document does not exonerate parties to a transaction from exercising all their rights and obligations under the transaction documents. Any unauthorized alteration, forgery or falsification of the content or appearance of this document is unlawful and offenders may be prosecuted to the fullest extent of the law. Unless otherwise stated the results shown in this test report refer only to the sample(s) tested. This document cannot be reproduced except in full, without prior approval of the Company.

ATTACHMENTS

Testing Flow Chart

- 1) Name of the person who made measurement: Sawen, Chen
- 2) Name of the person in charge of measurement: Michael Tso



This document is issued by the Company under its General Conditions of Service printed overleaf or available on request and accessible at http://www.sgs.com/terms_and_conditions.htm. Attention is drawn to the limitation of liability, indemnification and jurisdiction issues defined therein. Any holder of this document is advised that information contained hereon reflects the Company's findings at the time of its intervention only and within the limits of Client's instructions, if any. The Company's sole responsibility is to its Client and this document does not exonerate parties to a transaction from exercising all their rights and obligations under the transaction documents. Any unauthorized alteration, forgery or falsification of the content or appearance of this document is unlawful and offenders may be prosecuted to the fullest extent of the law. Unless otherwise stated the results shown in this test report refer only to the sample(s) tested. This document cannot be reproduced except in full, without prior approval of the Company.

Sample photo:



SGS authenticate the photo on original report only

*** End of Report ***

This document is issued by the Company under its General Conditions of Service printed overleaf or available on request and accessible at http://www.sgs.com/terms_and_conditions.htm. Attention is drawn to the limitation of liability, indemnification and jurisdiction issues defined therein. Any holder of this document is advised that information contained hereon reflects the Company's findings at the time of its intervention only and within the limits of Client's instructions, if any. The Company's sole responsibility is to its Client and this document does not exonerate parties to a transaction from exercising all their rights and obligations under the transaction documents. Any unauthorized alteration, forgery or falsification of the content or appearance of this document is unlawful and offenders may be prosecuted to the fullest extent of the law. Unless otherwise stated the results shown in this test report refer only to the sample(s) tested. This document cannot be reproduced except in full, without prior approval of the Company.